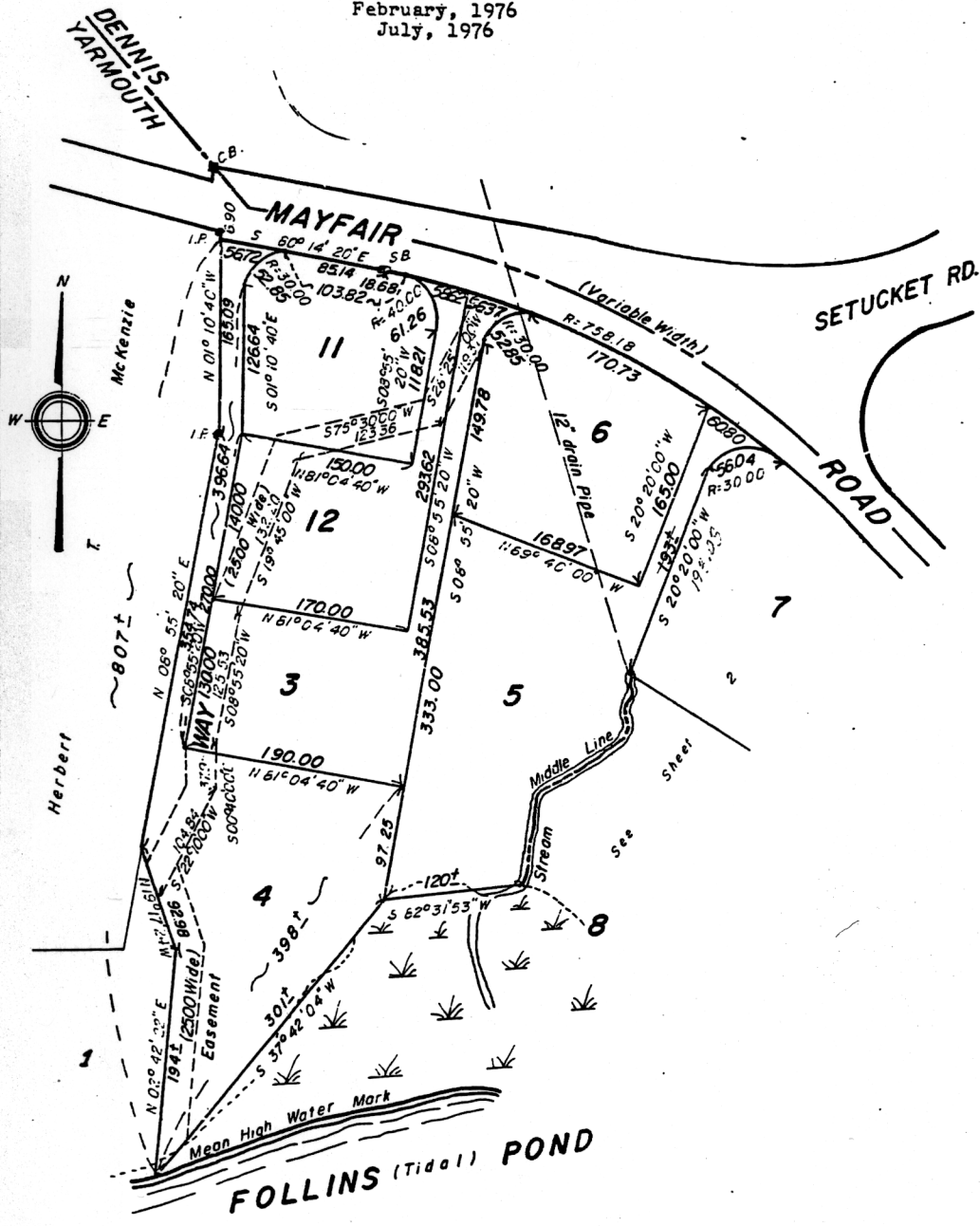


SUBDIVISION PLAN OF LAND IN YARMOUTH

34511 C
SHEET 1 of 2

down cape engineering, Surveyors

February, 1976
July, 1976



Subdivision of Lot 2
 Shown on Plan 34511B
 Filed with Cert. of Title No. 52056
 Registry District of Barnstable County

Separate certificates of title may be issued for land
 shown hereon and on sheet 2 as Lots 3 thru 12
 By the Court.

Mary Ann M. Daly
 Recorder

JULY 16, 1976
 M.B.E.

Copy of part of plan
 filed in
 LAND REGISTRATION OFFICE
 JULY 16, 1976
 Scale of this plan 100 feet to an inch
 R.L. Woodbury, Engineer for Court

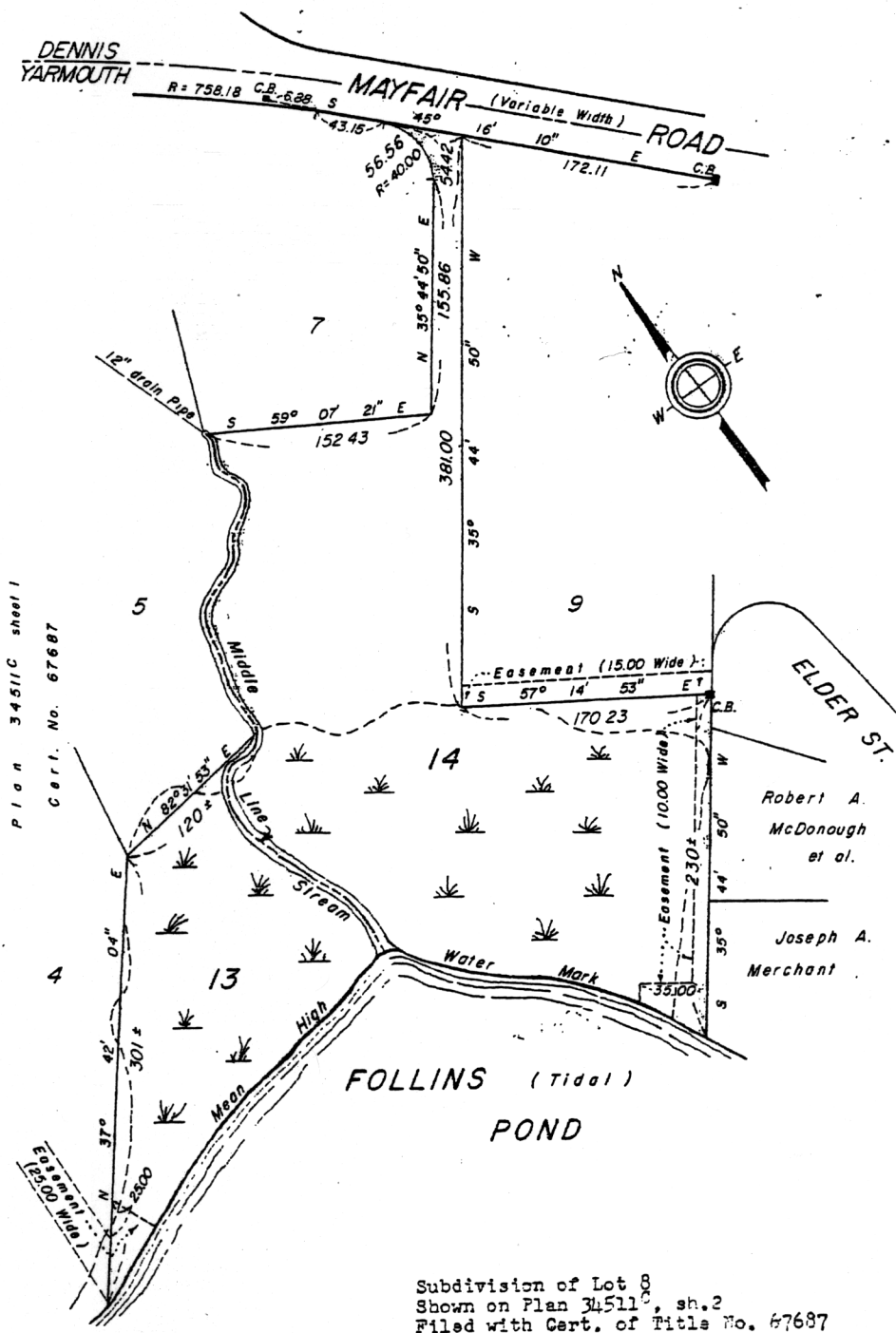
SUBDIVISION PLAN OF LAND IN YARMOUTH

George Low & Company, Surveyors

July 1978

34511^D

EX. B



Plan 34511C sheet 1
Cert. No. 67687

Subdivision of Lot 10
Shown on Plan 34511^D, sh. 2
Filed with Cert. of Title No. 67687
Registry District of Barnstable County

Separate certificates of title may be issued for land shown hereon as Lots 13 and 14 By the Court.

Copy of part of plan filed in
LAND REGISTRATION OFFICE
SEPT. 28, 1978
Scale of this plan 80 feet to an inch
R.L. Woodbury, Engineer for Court

SEPT. 28, 1978
ATS

Recorder